

WWW.INFIRE.PL



**ASSEMBLY CARD
INSERT ETRONIC**

**INFIRE KAROL LIPKA
UL. OBWODOWA 3
11-500 GAJEWO**

Contact:
biuro@infire.pl
infire@wp.pl

THIS DOCUMENT IS PART OF THE DEVICE

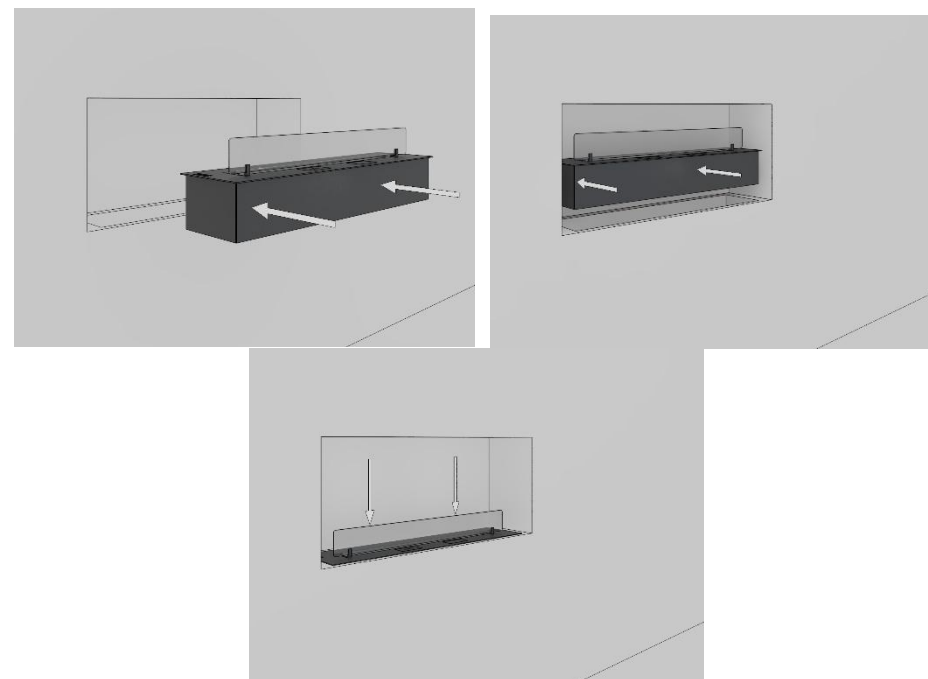
INSTALLATION

Please make sure that the delivered kit contains all the components,
i.e.:

- fireplace (casing)
- ETRONIC/ETRONIC BASIC burner
- glass with mountings

1. INSTALLATION IN A COUNTERTOP/CABINET:

1. Make sure that the COUNTERTOP/CABINET on or in which you place the appliance can support its weight.
2. Insert the fireplace frame into the prepared wall recess. The dimensions of the recess should be within a few millimeters so that the fireplace can be inserted.
3. Connect the cable to the mains. (230V)
4. Place the ETRONIC burner in the box and make sure it is level.
5. Place the glass in the glass holders.



Infire is not liable for any damage resulting from improper installation of the fireplace or from mounting the fireplace on an inappropriate wall/surface.